



# Iowa Ag News – Cattle on Feed

Upper Midwest Region - Iowa Field Office · 210 Walnut Street Ste 833 · Des Moines IA 50309 · (515) 284-4340 · (800) 772-0825  
fax (855) 271-9802 · www.nass.usda.gov

Cooperating with the Iowa Department of Agriculture and Land Stewardship

June 20, 2014

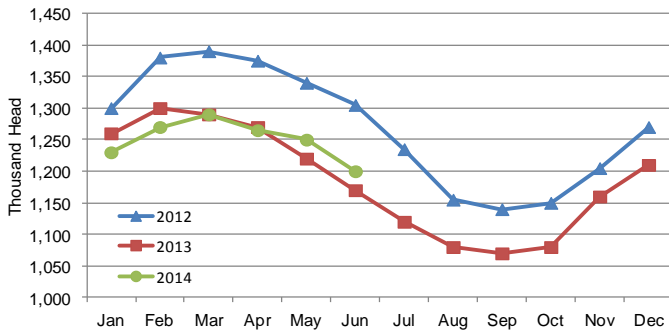
Media Contact: Greg Thessen

**Cattle and calves on feed** for slaughter market in Iowa for all feedlots totaled 1,200,000 on June 1, 2014 according to the USDA, National Agricultural Statistics Service, Iowa Field Office. The inventory is down 4 percent from May 1, 2014 but up 3 percent from June 1, 2013. Feedlots with a capacity greater than 1,000 head had 640,000 head on feed, down 3 percent from last month but up 5 percent from last year. Feedlots with a capacity less than 1,000 head had 560,000 head on feed, down 5 percent from last month but unchanged from last year.

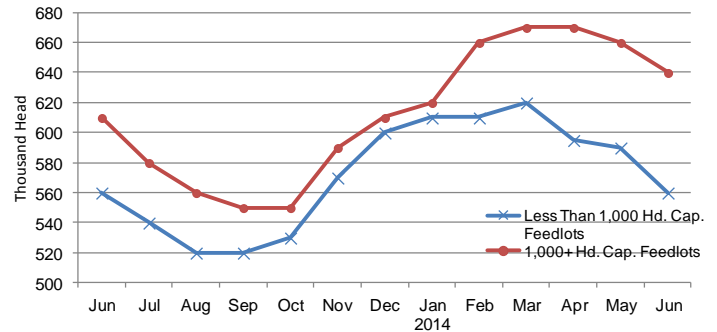
**Placements** during May totaled 96,000 head, a decrease of 27 percent from last month and 8 percent from last year. Feedlots with a capacity greater than 1,000 head placed 54,000 head, down 22 percent from last month and down 17 percent from last year. Feedlots with a capacity less than 1,000 head placed 42,000 head. This is down 32 percent from last month but up 8 percent from last year.

**Marketings** for May were 138,000 head, down 2 percent from last month and down 7 percent from last year. Feedlots with a capacity greater than 1,000 head marketed 70,000 head, down 8 percent from last month and down 3 percent from last year. Feedlots with a capacity less than 1,000 head marketed 68,000 head, up 5 percent from last month but down 12 percent from last year. **Other disappearance** totaled 8,000 head.

**Cattle on Feed, Inventory on all Feedlots, Iowa:  
2012-2014**



**Cattle on Feed, Inventory by Feedlot Capacity, Iowa:  
Current Month & Past 12 Months**



## All Cattle on Feed, Iowa

| Item                               | Lots 1,000+ Head | Lots Less than 1,000 Head | All Lots     |
|------------------------------------|------------------|---------------------------|--------------|
|                                    | (1,000 Head)     | (1,000 Head)              | (1,000 Head) |
| Cattle on Feed, May 1, 2014.....   | 660              | 590                       | 1,250        |
| May Placements .....               | 54               | 42                        | 96           |
| May Marketings .....               | 70               | 68                        | 138          |
| May Other Disappearance .....      | 4                | 4                         | 8            |
| Cattle on Feed, June 1, 2014 ..... | 640              | 560                       | 1,200        |

## Cattle on Feed: Number on Feed, Placements, Marketings, and Other Disappearance by Month, 1,000+ Capacity Feedlots

[Cattle and calves on feed are animals for slaughter market being fed a ration of grain or other concentrates and are expected to produce a carcass that will grade select or better.]

| State             | Cattle on Feed June 1 |              |                 | Placements during May |              |                 | Marketings during May |              |                 | May Disappearance other than Slaughter <sup>1</sup> |              |                 |
|-------------------|-----------------------|--------------|-----------------|-----------------------|--------------|-----------------|-----------------------|--------------|-----------------|-----------------------------------------------------|--------------|-----------------|
|                   | 2013                  | 2014         | '14 as % of '13 | 2013                  | 2014         | '14 as % of '13 | 2013                  | 2014         | '14 as % of '13 | 2013                                                | 2014         | '14 as % of '13 |
|                   | (1,000 Head)          | (1,000 Head) | (Percent)       | (1,000 Head)          | (1,000 Head) | (Percent)       | (1,000 Head)          | (1,000 Head) | (Percent)       | (1,000 Head)                                        | (1,000 Head) | (Percent)       |
| Arizona .....     | 272                   | 275          | 101             | 25                    | 24           | 96              | 27                    | 25           | 93              | 1                                                   | 1            | 100             |
| California .....  | 510                   | 435          | 85              | 72                    | 50           | 69              | 54                    | 60           | 111             | 3                                                   | 5            | 167             |
| Colorado .....    | 960                   | 930          | 97              | 170                   | 140          | 82              | 150                   | 145          | 97              | 20                                                  | 25           | 125             |
| Idaho .....       | 205                   | 205          | 100             | 41                    | 23           | 56              | 45                    | 32           | 71              | 1                                                   | 1            | 100             |
| <b>Iowa .....</b> | <b>610</b>            | <b>640</b>   | <b>105</b>      | <b>65</b>             | <b>54</b>    | <b>83</b>       | <b>72</b>             | <b>70</b>    | <b>97</b>       | <b>3</b>                                            | <b>4</b>     | <b>133</b>      |
| Kansas .....      | 2,070                 | 2,020        | 98              | 430                   | 435          | 101             | 410                   | 400          | 98              | 20                                                  | 25           | 125             |
| Minnesota .....   | 131                   | 123          | 94              | 17                    | 8            | 47              | 15                    | 22           | 147             | 1                                                   | 1            | 100             |
| Nebraska .....    | 2,340                 | 2,410        | 103             | 470                   | 425          | 90              | 510                   | 485          | 95              | 20                                                  | 20           | 100             |
| Oklahoma .....    | 310                   | 265          | 85              | 78                    | 67           | 86              | 61                    | 55           | 90              | 2                                                   | 2            | 100             |
| South Dakota ..   | 215                   | 225          | 105             | 39                    | 34           | 87              | 45                    | 41           | 91              | 4                                                   | 3            | 75              |
| Texas .....       | 2,630                 | 2,550        | 97              | 570                   | 580          | 102             | 465                   | 450          | 97              | 15                                                  | 10           | 67              |
| Washington .....  | 214                   | 201          | 94              | 40                    | 40           | 100             | 45                    | 45           | 100             | 1                                                   | 2            | 200             |
| Other States .... | 300                   | 315          | 105             | 38                    | 32           | 84              | 49                    | 35           | 71              | 9                                                   | 2            | 22              |
| United States ... | 10,767                | 10,594       | 98              | 2,055                 | 1,912        | 93              | 1,948                 | 1,865        | 96              | 100                                                 | 101          | 101             |

<sup>1</sup>Includes death loss, movement from feedlots to pasture, and shipments to other feedlots for further feeding.

## United States Cattle on Feed

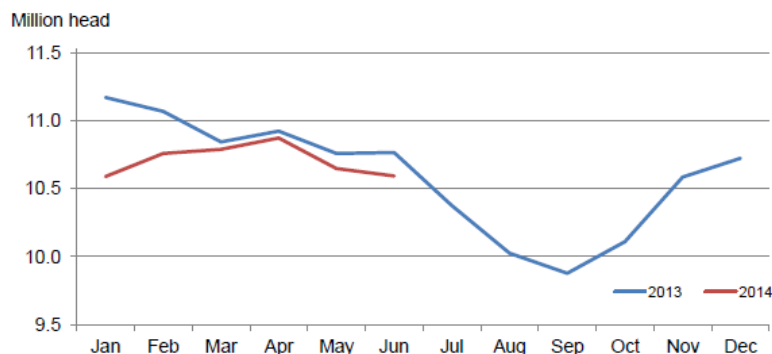
Cattle and calves on feed for slaughter market in the United States for feedlots with capacity of 1,000 or more head totaled 10.6 million head on June 1, 2014. The inventory was 2 percent below June 1, 2013.

Placements in feedlots during May totaled 1.91 million, 7 percent below 2013. Net placements were 1.81 million head. During May, placements of cattle and calves weighing less than 600 pounds were 435,000, 600-699 pounds were 290,000, 700-799 pounds were 477,000, and 800 pounds and greater were 710,000.

Marketings of fed cattle during May totaled 1.87 million, 4 percent below 2013. May marketings are the lowest for the month since the series began in 1996.

Other disappearance totaled 101,000 during May, 1 percent above 2013.

**Cattle on Feed Inventory on 1,000+ Capacity Feedlots – United States**



The complete report can be found under **Publications** on the USDA NASS website at [www.nass.usda.gov](http://www.nass.usda.gov).